



**£550** Weekly

Iconic Apartments, Whitechapel High Street, Aldgate East, E1

Flat | 2 Bedrooms | 2 Bathrooms



020 3925 0743

[www.thepropertyclub.london](http://www.thepropertyclub.london)



# Step Inside

---

## Key Features

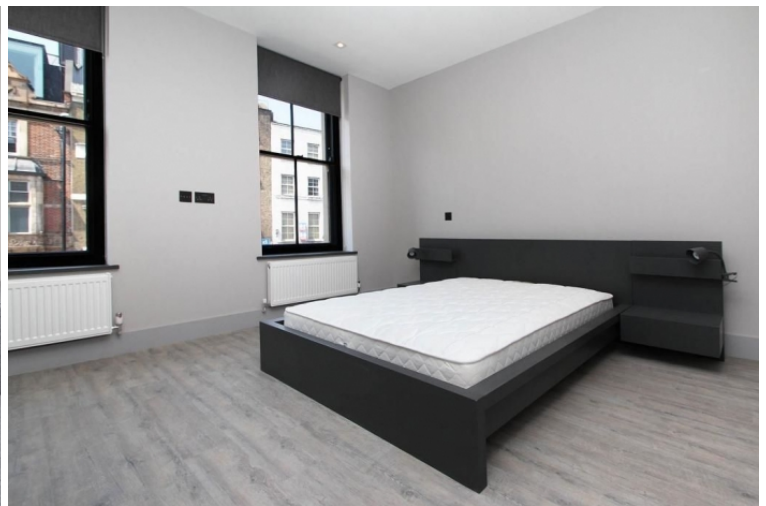
- Duplex
- Factory Conversion
- Furnished to High Standard
- Manhattan Style Apartment
- Roof Terrace
- Over 1000 sq ft
- Top Floor

## Property Description

A recently converted 2 double bedroom split level apartment set within this beautifully refurbished clothing factory. Offering over 900 square feet of living accommodation, two spacious double bedrooms, a luxury bathroom, guest toilet and roof terrace.

## Main Particulars

Set over the top two floors of this stunning building and comprises of two large double bedrooms, one with fitted wardrobe, a large living room which is bright and expansive and has acoustic glass which offers peaceful panoramic views over the Whitechapel Art Gallery as well as skylights which makes this room extremely light, an open plan kitchen with stainless steel appliances equipped, fridge freezer, oven, hob, dishwasher and washer dryer. The main bathroom is breath taking and visually brilliant, with floor to ceiling glass alongside large slate tile. There is a further WC as well as added storage space whilst the top floor of this property is set with a superb private roof terrace from which you can enjoy 360 degree views across the city.



Telephone: 020 3925 0743



---

[www.thepropertyclub.london](http://www.thepropertyclub.london)